

## 6005 Joker Double open end wrench, 12 x 13 x 166 mm

### 6005 Joker Double open-ended wrench



<b>EAN:</b>	4013288224903	<b>Size:</b>	165x55x17 mm
<b>Part number:</b>	05020313001	<b>Weight:</b>	88 g
<b>Article number:</b>	6005 Joker Double	<b>Country of origin:</b>	TW
		<b>Customs tariff number:</b>	84661038

- Double open-ended wrench
- Especially suitable for tight spaces
- The special open end geometry expands the placement possibilities of the tool
- The low return angle in the open end "takes" the screw every 15°
- With Take it easy tool finder: colour coding by size

As installation spaces become increasingly confined, it is necessary that tools enable users to work successfully even in such situations. Narrow spaces require additional placement points of the tool. Can spanners be modified to increase the placement possibilities of the tool? The combination of the 7.5° offset open end and the double hexagon geometry doubles the placement points. A repeated 180° turn of the wrench around the longitudinal axis during screwdriving provides four placement possibilities, and bolts or screw heads can be engaged every 15°. The Joker 6005 with its smart open end geometry significantly expands the range of uses in confined spaces. The Joker 6005 will automatically find the respective placement point after every turn. The high-quality surface treatment achieves a high and long-lasting corrosion protection. With Take it easy tool finder: Colour coding by size.



#### Web link

[https://products.wera.de/en/joker\\_6005\\_joker\\_double\\_open-ended\\_wrench\\_6005\\_joker\\_double.html](https://products.wera.de/en/joker_6005_joker_double_open-ended_wrench_6005_joker_double.html)

Wera - 6005 Joker Double  
05020313001 - 4013288224903

Wera Werkzeuge GmbH  
Korzter Straße 21-25  
D-42349 Wuppertal  
Tel: +49 (0)2 02 / 40 45-0  
E-Mail: [info@wera.de](mailto:info@wera.de)

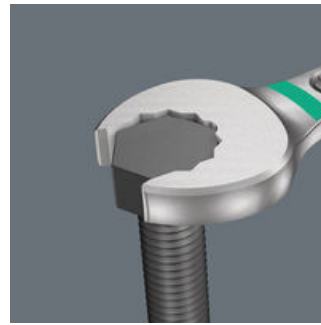
6005 Joker Double open-ended wrench

For very tight spaces



The Joker 6005 double open end wrench with its special open end design - a 7.5° offset open end and double hexagon geometry - doubles the placement points at a repeated 180° rotation of the wrench around the longitudinal axis. Bolts and screw heads can be engaged every 15°. The Joker 6005 will automatically find the respective placement point after every turn.

Double-hex geometry



The double hexagonal geometry of the open end of the Joker 6005 double open end wrench ensures the positive connection with the screw head or the bolt and reduces the risk of slipping.

For return angles of less than 30°



Thanks to the 7.5° offset open end, the double hexagon geometry and an improved application method (placement - screwdriving - rotation - re-placement - screwdriving - rotation etc), even screwdriving situations that have a return angle of less than 30° can be solved.

“Take it easy” tool finder



Take it easy tool finder system - with profile and size colour-coding for quick and easy tool selection. Colour-coded system for hexagon drive screws (L-Keys, Zyklus bit sockets), external hex drive screws and nuts (Joker wrenches, Zyklus sockets and Zyklus bit sockets with holding function), and TORX® drive screws (L-Keys, Zyklus bit sockets).

Web link

[https://products.wera.de/en/joker\\_6005\\_joker\\_double\\_open-ended\\_wrench\\_6005\\_joker\\_double.html](https://products.wera.de/en/joker_6005_joker_double_open-ended_wrench_6005_joker_double.html)

Wera - 6005 Joker Double  
05020313001 - 4013288224903





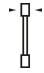
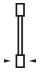
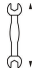
Wera Werkzeuge GmbH  
Korzter Straße 21-25  
D-42349 Wuppertal  
Tel: +49 (0)2 02 / 40 45-0  
E-Mail: info@wera.de

## 6005 Joker Double open end wrench, 12 x 13 x 166 mm

### 6005 Joker Double open-ended wrench



#### Further versions in this product family:

								
		mm	mm	mm	mm	mm	mm	mm
05020310001	blau_307C/ge lb_123C	6	16	7	17.7	4	4.2	111.8
05020311001	leuchtpink_23 2C/gruen_36 3C	8	19	9	21	4.5	4.8	122.2
05020312001	leuchtgelb_yel lowC/cyan_29 85C	10	23	11	25	5	5	137.3
<b>05020313001</b>	<b>schwarz_bla ckC/tuerkis_ 339C</b>	<b>12</b>	<b>26</b>	<b>13</b>	<b>27</b>	<b>5.5</b>	<b>6</b>	<b>166</b>

#### Web link

[https://products.wera.de/en/joker\\_6005\\_joker\\_double\\_open-ended\\_wrench\\_6005\\_joker\\_double.html](https://products.wera.de/en/joker_6005_joker_double_open-ended_wrench_6005_joker_double.html)

Wera - 6005 Joker Double  
05020313001 - 4013288224903

Wera Werkzeuge GmbH  
Korzter Straße 21-25  
D-42349 Wuppertal  
Tel: +49 (0)2 02 / 40 45-0  
E-Mail: info@wera.de